

SOFFIANTI A CANALI LATERALI

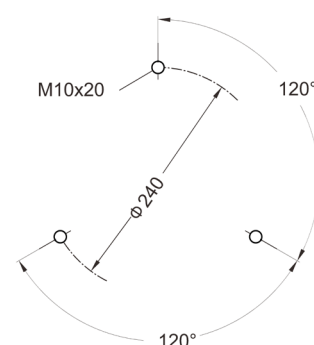
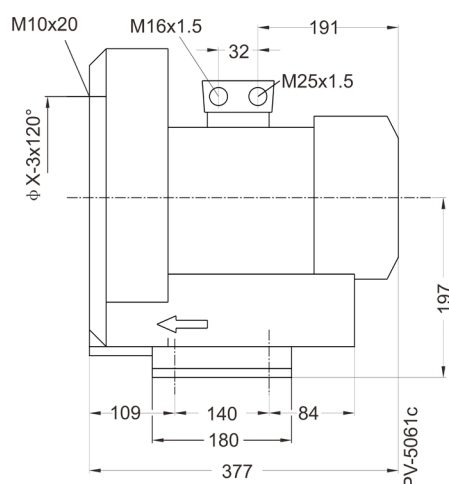
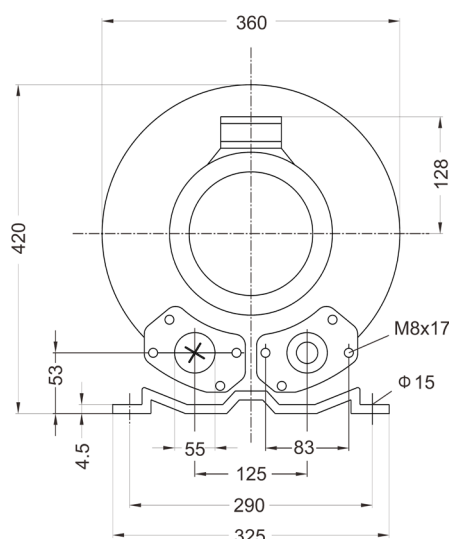
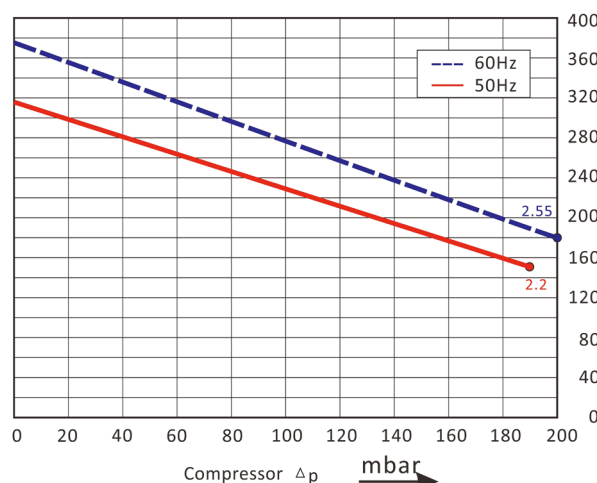
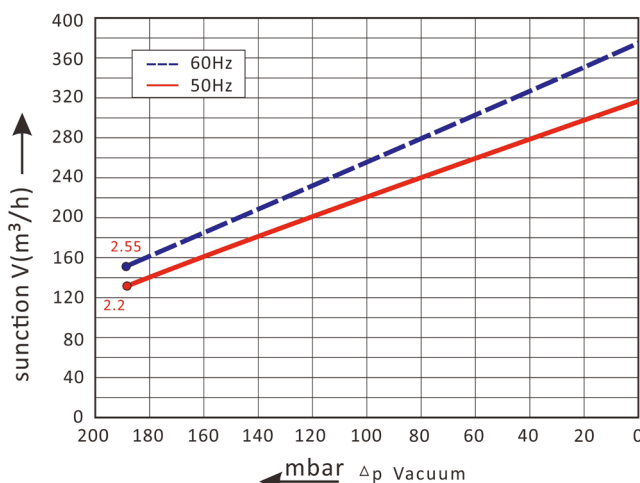
Side channel blowers



ESC601M2.2

Le curve sono il risultato di test effettuati a pressione atmosferica e temperatura di 15°C. La tolleranza è di $\pm 10\%$.

The performance curves are tested under atmospheric pressure and air temperature at 15°C. The tolerance is $\pm 10\%$.



CURVA Curve (n.)	MODELLO Model	FREQUENZA Frequency (Hz)	POTENZA Power (kW)	VOLTAGGIO Voltage (V)	ASSORBIMENTO Current (A)	RUMOROSITÀ Noise (dB)	PESO Weight (Kg)
1	ESC601M2.2	50	2.2	200-240 V	12.8	72	30
2	ESC601M2.2	60	2.55	220-275 V	12.8	74	30



SOFFIANTI A CANALI LATERALI

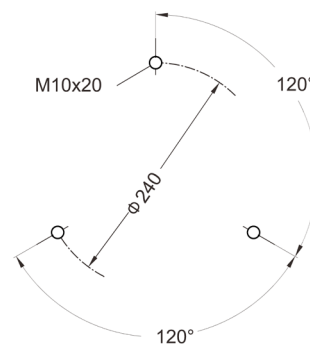
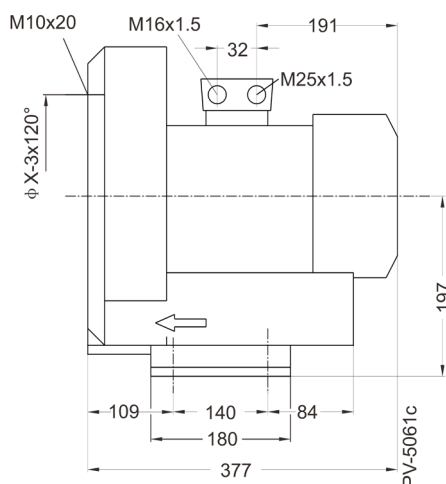
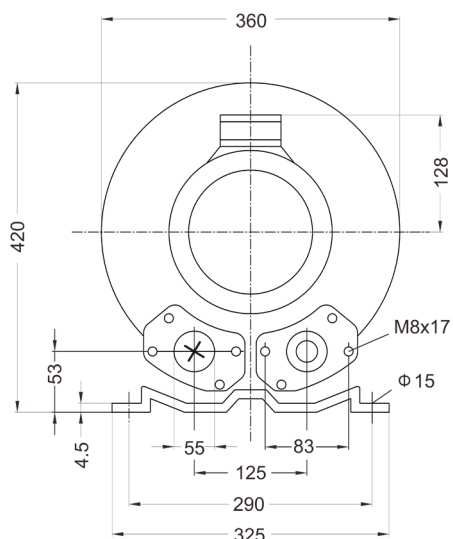
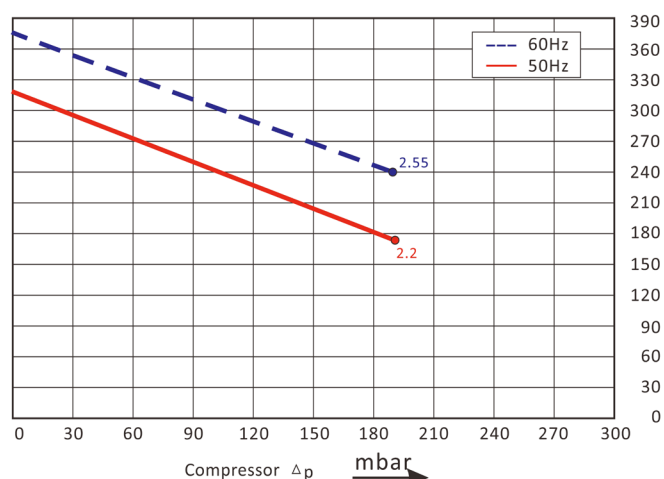
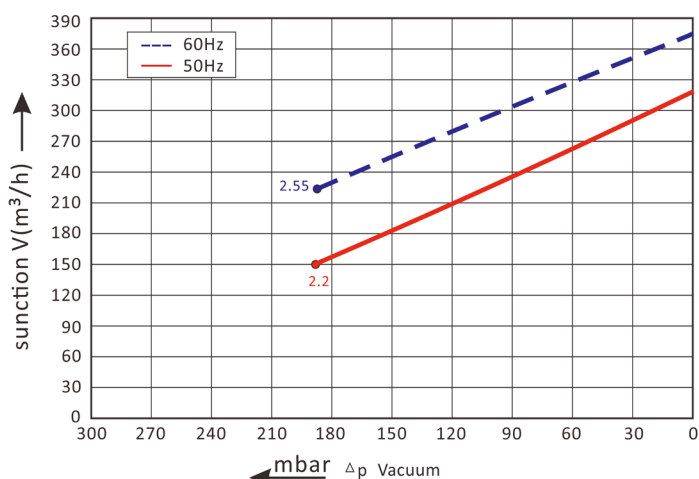
Side channel blowers



ESC601T2.2

Le curve sono il risultato di test effettuati a pressione atmosferica e temperatura di 15°C. La tolleranza è di $\pm 10\%$.

The performance curves are tested under atmospheric pressure and air temperature at 15°C. The tolerance is $\pm 10\%$.



CURVA Curve (n.)	MODELLO Model	FREQUENZA Frequency (Hz)	POTENZA Power (kW)	VOLTAGGIO Voltage (V)	ASSORBIMENTO Current (A)	RUMOROSITÀ Noise (dB)	PESO Weight (Kg)
1	ESC601T2.2	50	2.2	200-240Δ 345-415Y	9.7Δ/5.6Y	69	29
2	ESC601T2.2	60	2.55	220-275Δ 380-480Y	10.3Δ/5.8Y	72	29



SOFFIANTI A CANALI LATERALI

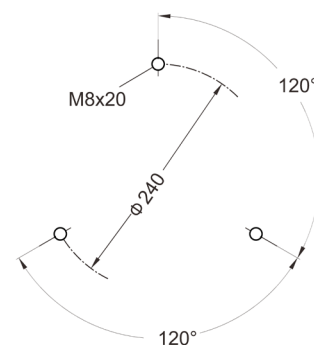
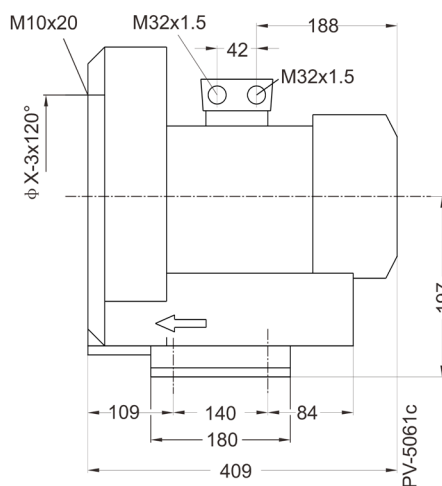
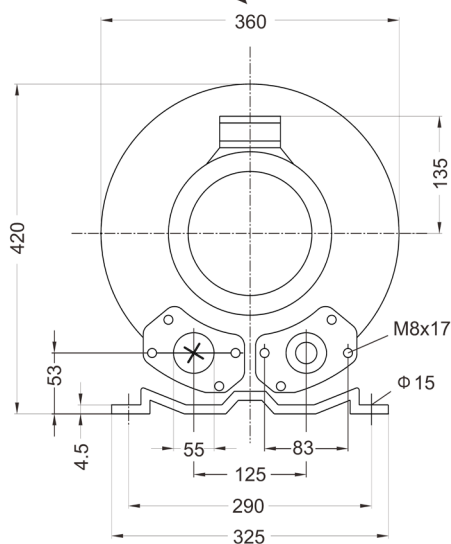
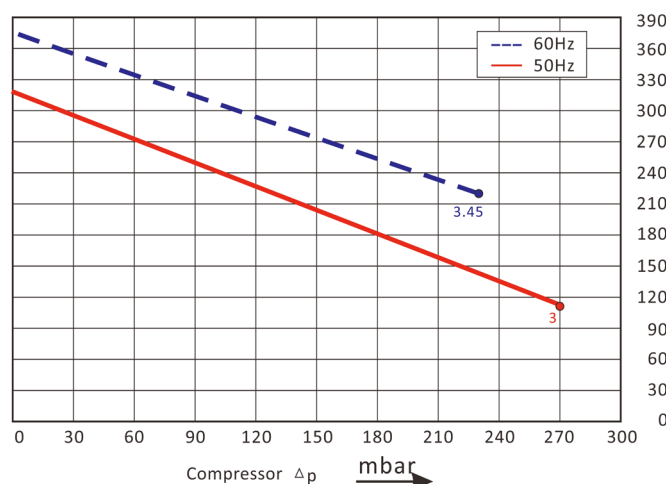
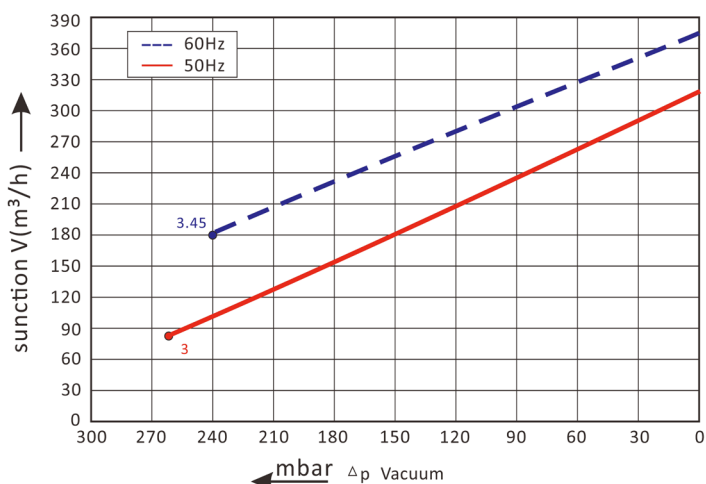
Side channel blowers



ESC601T3.0

Le curve sono il risultato di test effettuati a pressione atmosferica e temperatura di 15°C. La tolleranza è di $\pm 10\%$.

The performance curves are tested under atmospheric pressure and air temperature at 15°C. The tolerance is $\pm 10\%$.



CURVA Curve (n.)	MODELLO Model	FREQUENZA Frequency (Hz)	POTENZA Power (kW)	VOLTAGGIO Voltage (V)	ASSORBIMENTO Current (A)	RUMOROSITÀ Noise (dB)	PESO Weight (Kg)
1	ESC601T3.0	50	3.0	200-240Δ 345-415Y	12.5Δ/7.2Y	69	34
2	ESC601T3.0	60	3.45	220-275Δ 380-480Y	12.5Δ/7.3Y	72	34



SOFFIANTI A CANALI LATERALI

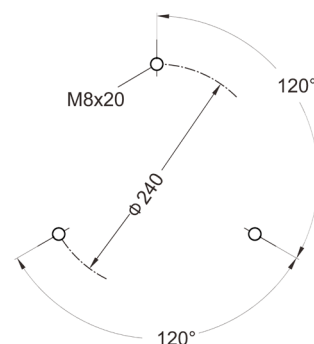
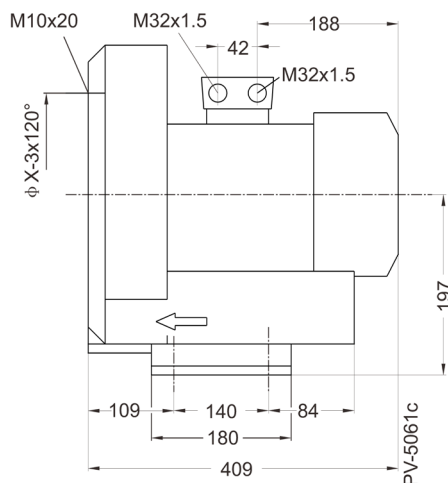
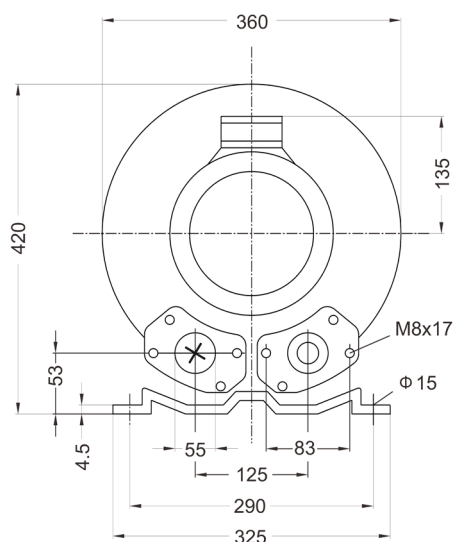
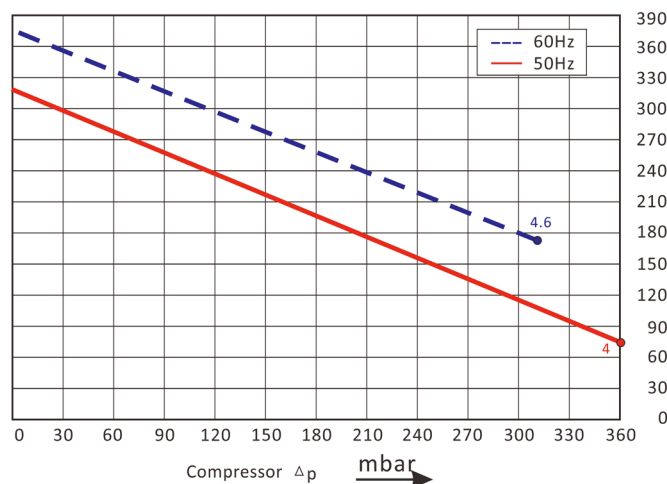
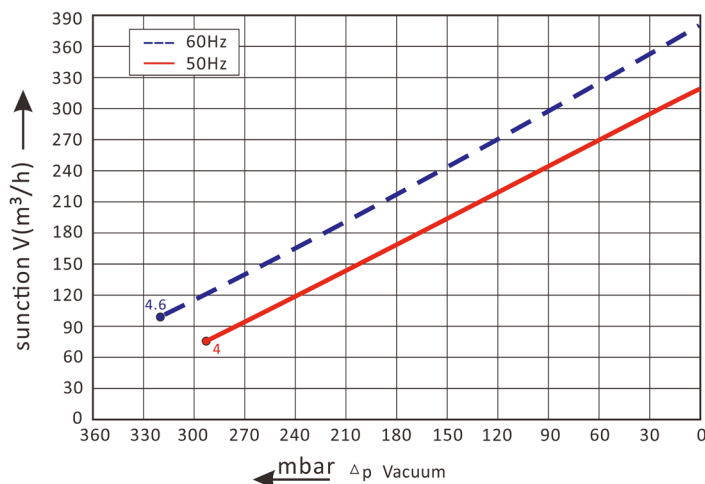
Side channel blowers



ESC601T4.0

Le curve sono il risultato di test effettuati a pressione atmosferica e temperatura di 15°C. La tolleranza è di $\pm 10\%$.

The performance curves are tested under atmospheric pressure and air temperature at 15°C. The tolerance is $\pm 10\%$.



CURVA Curve (n.)	MODELLO Model	FREQUENZA Frequency (Hz)	POTENZA Power (kW)	VOLTAGGIO Voltage (V)	ASSORBIMENTO Current (A)	RUMOROSITÀ Noise (dB)	PESO Weight (Kg)
1	ESC601T4.0	50	4.0	345-415Δ 600-690Y	9.7Δ/5.6Y	69	29
2	ESC601T4.0	60	4.6	380-480Δ 660-720Y	10.3Δ/5.8Y	72	29

