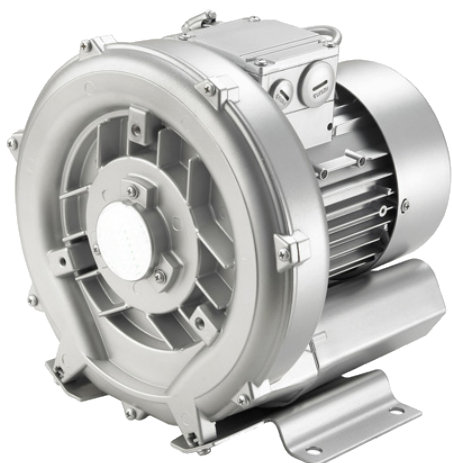


# SOFFIANTI A CANALI LATERALI

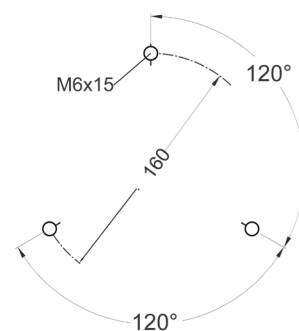
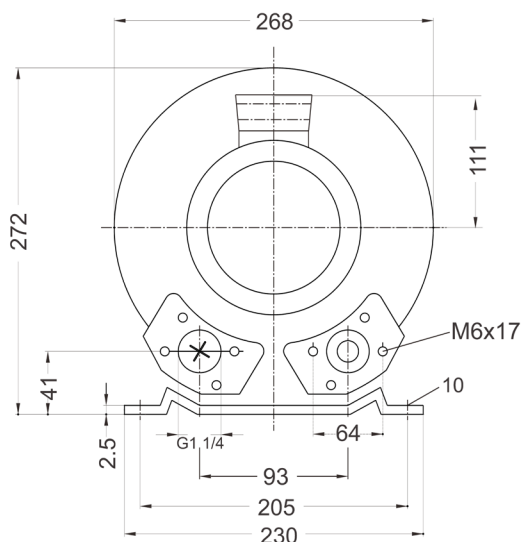
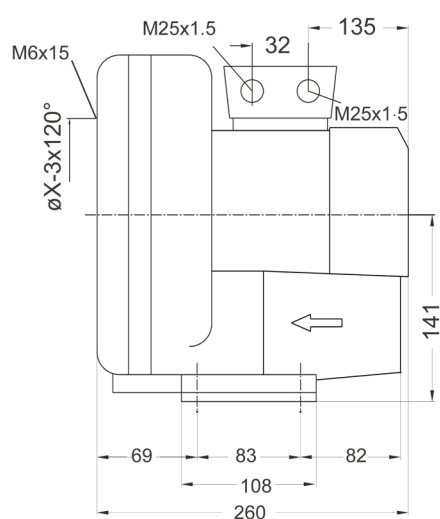
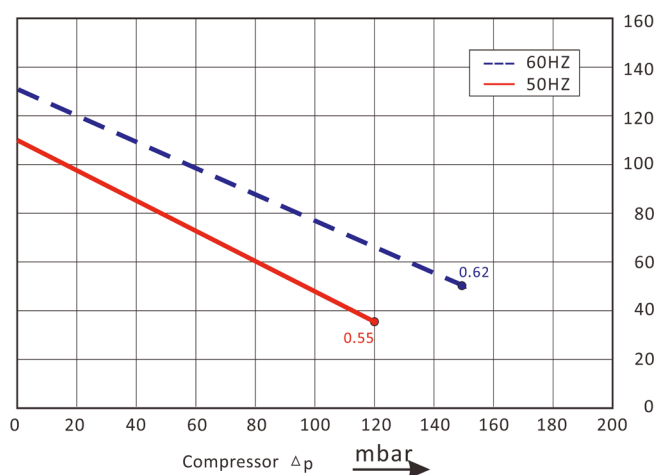
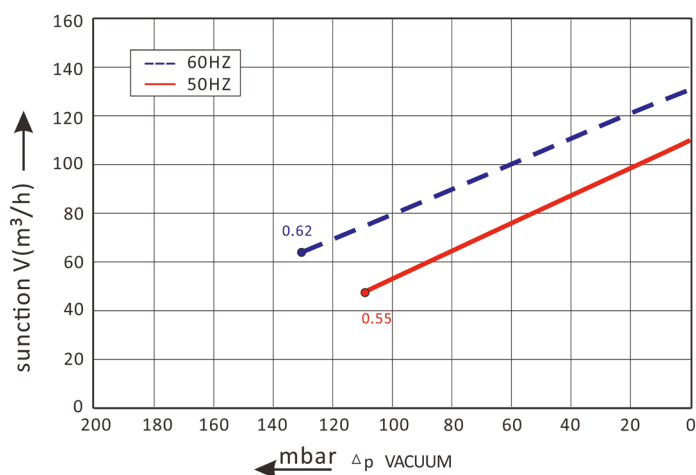
Side channel blowers



## ESC301M0.55

Le curve sono il risultato di test effettuati a pressione atmosferica e temperatura di 15°C. La tolleranza è di  $\pm 10\%$ .

The performance curves are tested under atmospheric pressure and air temperature at 15°C. The tolerance is  $\pm 10\%$ .



CURVA Curve (n.)	MODELLO Model	FREQUENZA Frequency (Hz)	POTENZA Power (kW)	VOLTAGGIO Voltage (V)	ASSORBIMENTO Current (A)	RUMOROSITÀ Noise (dB)	PESO Weight (Kg)
1	ESC301M0.55	50	0.55	200-240 V	3.7	57	12
2	ESC301M0.55	60	0.62	220-275 V	4.9	60	12



# SOFFIANTI A CANALI LATERALI

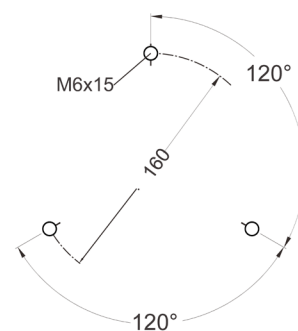
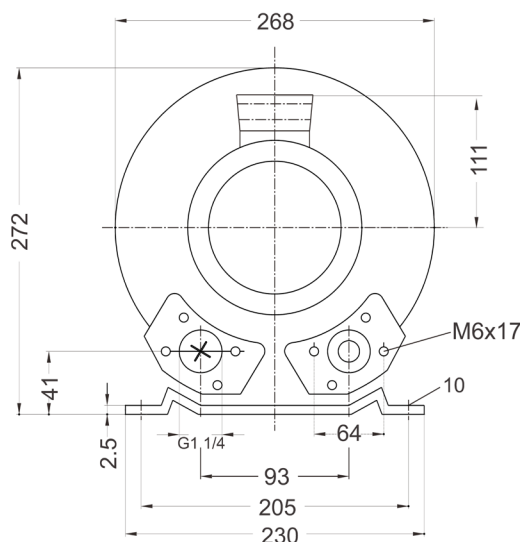
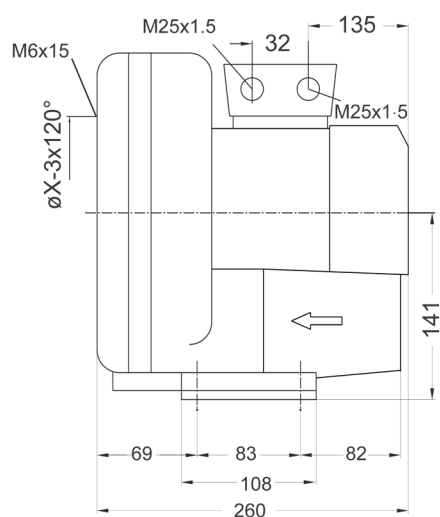
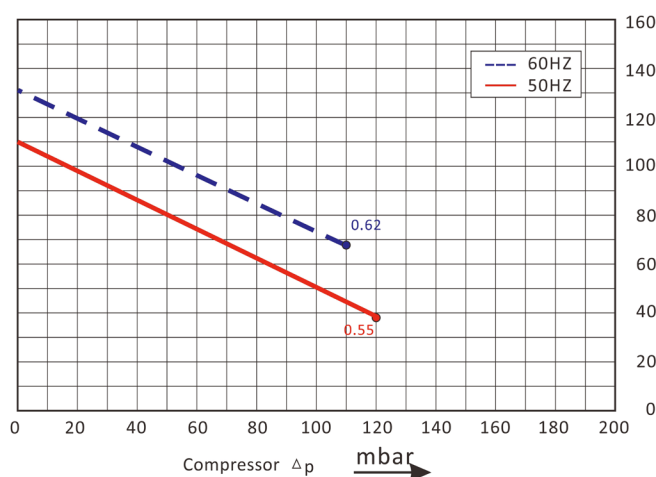
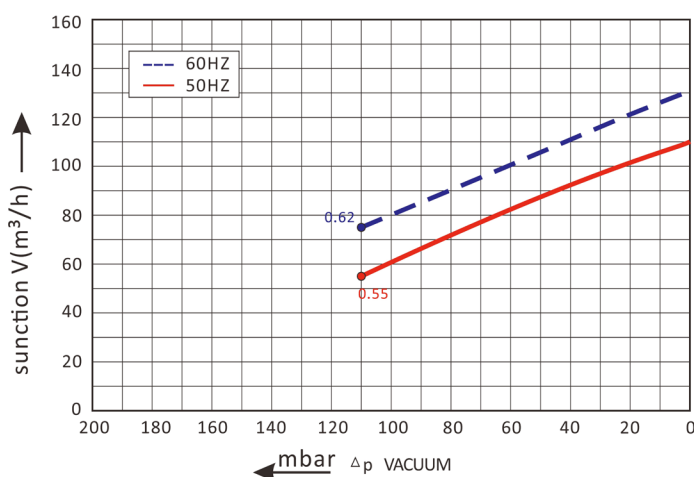
Side channel blowers



## ESC301T0.55

Le curve sono il risultato di test effettuati a pressione atmosferica e temperatura di 15°C. La tolleranza è di  $\pm 10\%$ .

The performance curves are tested under atmospheric pressure and air temperature at 15°C. The tolerance is  $\pm 10\%$ .



CURVA Curve (n.)	MODELLO Model	FREQUENZA Frequency (Hz)	POTENZA Power (kW)	VOLTAGGIO Voltage (V)	ASSORBIMENTO Current (A)	RUMOROSITÀ Noise (dB)	PESO Weight (Kg)
1	ESC301T0.55	50	0.55	200-240Δ 345-415Y	2.4Δ/1.7Y	57	12
2	ESC301T0.55	60	0.62	220-275Δ 380-480Y	2.6Δ/1.5Y	60	12

