

GHBH Series

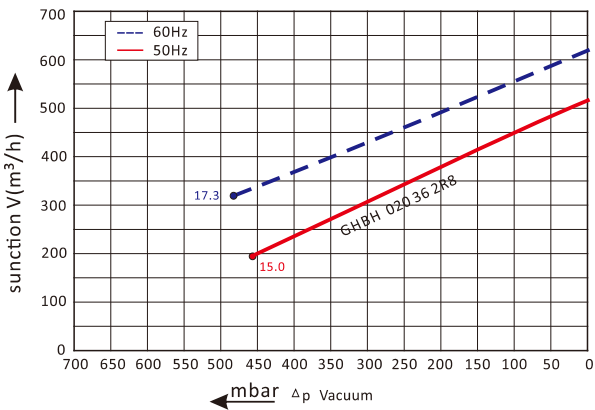
GHBH 020 36 2R8-IE3

Technical datasheet

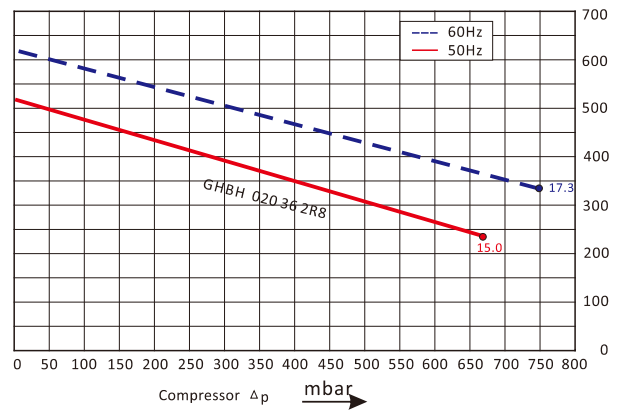


Goorui blower performance curves

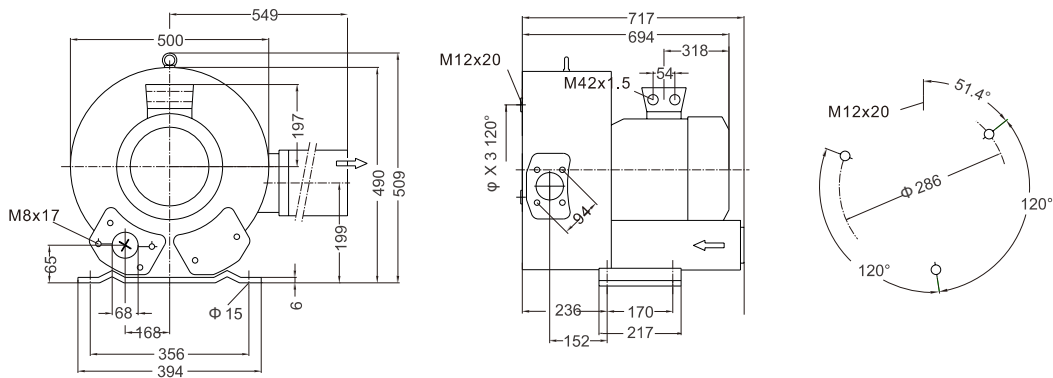
Vacuum selection diagram curve



Compressor selection diagram curve



Goorui blower installation drawing



Goorui blower parameter

Model	Frequency	Output	voltage	Current	airflow	pressure		noise	Weight
						vacuum mbar	compressor mbar		
3~ 50/60Hz IP55 INSULATION class H with Thermal Protector									
GHBH 020 36 2R8	50	15.0	345-415 Δ /600-690Y	32.5 Δ /18.8Y	520	-460	670	74	120
GHBH 020 36 2R8	60	17.3	380-480 Δ /660-720Y	34.5 Δ /19.9Y	620	-490	750	78	120

The performance curves of Goorui blower is tested through below ways:

Under one atmospheric pressure, suck 15°C air and then you can calculate the data, of course allow 10% difference, and when the sucked air and surroundings temperature are not higher than 25°C, you still can get total pressure difference as the curves shows.